



ASTARO WIRELESS SECURITY DATASHEET

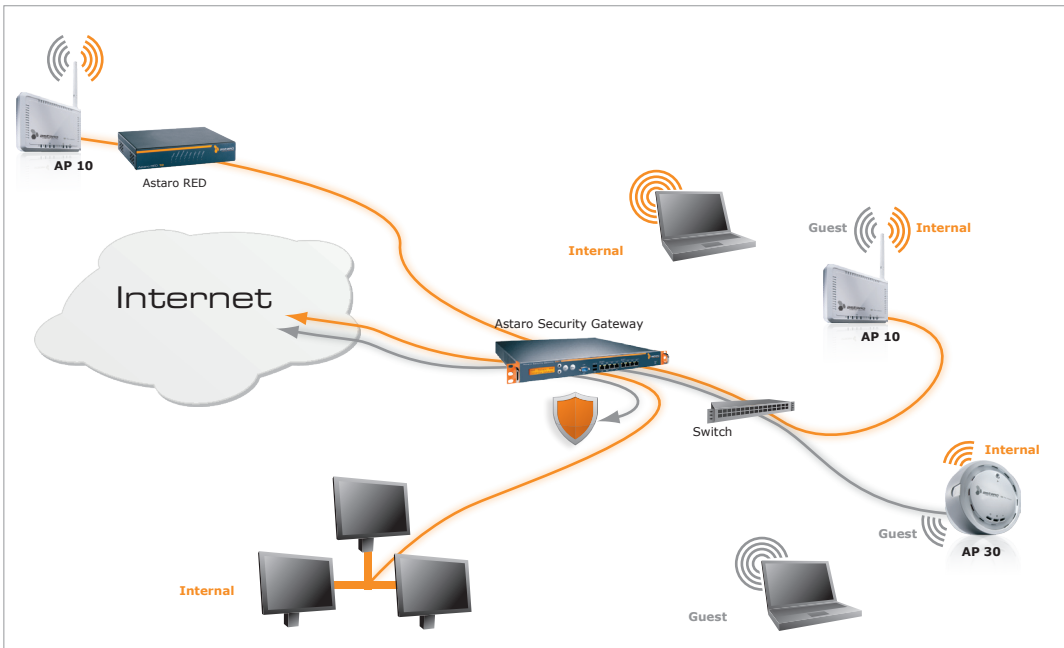
Air Traffic Control For Your Network

Every organization needs wireless networking, but existing solutions either lack important functionality or are difficult to manage. Astaro Wireless Security is a new approach that dramatically simplifies the operation of secure and reliable wireless networks. With Astaro Security Gateway's built-in wireless controller, our access points are cost-effective and require no manual configuration, redefining wireless networking.

Learn More!

Get more information on wireless security in two minutes:

www.astaro.com/wifi/2me



Benefits

- > Easy setup of multiple wireless access points and AP groups
- > No local configuration of access points required
- > Complete UTM protection for all wireless clients
- > Maximum protection for air traffic
- > Uninterrupted signal covering the whole office
- > Quick setup of multiple wireless zones

Simple

Plug & Play Deployment
Plug the access point to anywhere in your network, it will then show up in Astaro Security Gateway automatically.

Central Management
Monitor and manage all APs and wireless clients centrally through the built-in wireless controller of ASG.

Secure

Integrated Security
Instantly protect your APs and wireless clients through complete UTM security provided by the central ASG.

Strong Encryption
Support of state-of-the-art wireless authentication ensures the wireless connection is as secure as it gets.

Accessible

Placement Choice
All access points can be placed anywhere in the organization and their wireless signal will cover the whole office.

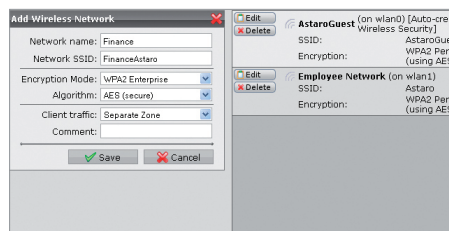
Guest Internet Access
Easily set up wireless guest Internet access without the risk of compromising the integrity of your network.

„What I really like about Astaro's integrated wireless security approach is that it frees our administrators from separately managing an expensive enterprise wireless solution.“

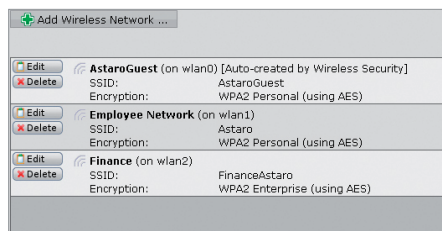
Jason Richards, CEO
Vineyard Networks

User Interface

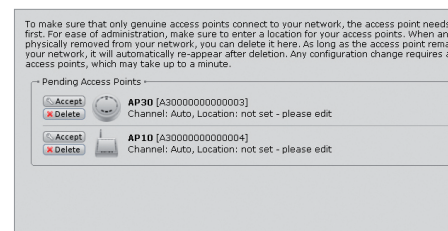
Astaro Wireless Security is a new approach that dramatically simplifies the operation of secure and reliable wireless networks through Astaro Security Gateway's WebAdmin.



Configuration of wireless networks






List of wireless networks



Access point detection and authorization

Technical Specifications

Wireless Controller	ASG 110	ASG 120	ASG 220	ASG 320	ASG 425	ASG 525	ASG 625
Recommended Sizing							
Number of Access Points	2	4	8	16	32	64	128
Number of Wireless Users	10	25	50	100	250	500	1,000
Security Features							
Wi-Fi Protected Access (WPA/WPA2)	•	•	•	•	•	•	•
Wired Equivalent Privacy (WEP)	•	•	•	•	•	•	•
802.1x Authentication (RADIUS)	•	•	•	•	•	•	•
Multiple SSIDs	8	8	8	8	8	8	8
Required Subscriptions Wireless Security							
Access Points							
	AP10 		AP30 		AP50 		
Capacity							
Maximum Users	Up to 10 users		Up to 30 users		Up to 50 users		
Maximum Throughput	150 Mbit/s		300 Mbit/s		300 Mbit/s		
Physical Interfaces							
LAN Interfaces	1 x 10/100 Base TX		1 x 10/100 Base TX		1 x 10/100/1000 Base TX		
Wireless Interfaces	802.11 b/g/n 2.4 GHz		802.11 b/g/n 2.4 GHz		802.11 a/b/g/n 2.4 and 5 GHz		
Antennas	1 x detachable dipole		3 x directional internal		2 x 2.4G/5G dual-band		
Power over Ethernet	-		802.3af		802.3at (PoE+)		
LED Display	Power, LAN, WLAN		Power, LAN, WLAN		Power, LAN, 2.4 GHz WLAN, 5 GHz WLAN		
Power Supply	90-240 V, 50/60 Hz		90-240 V, 50/60 Hz		100-240 VAC, 50/60 Hz		
Physical Specifications							
Dimensions (W x H x D)	124 x 25 x 96 mm		ø 120 mm, height 50 mm		154 x 30 x 119 mm		
Weight	130 g		230 g		390 g		
Mounting	Desktop/wall		Desktop/ceiling		Desktop/wall		
Safety Regulations							
Certifications	FCC, CE, MIC, VCCI		FCC, CE, MIC, VCCI		FCC, CE		

Contact

Visit us at www.astaro.com or contact the Astaro partner close to you.

Your Solution Partner

